

Vehicle Thermal Imaging System



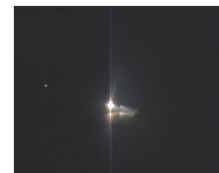
- Unique shake proof technology
- Internal heat system to prevent fog and ice on lens surface
- Full real-time high resolution image displayed
- Compact design, Easy installation, Rich Integration Options



CCD Night vision



High vision with Thermal system



CCD Night vision

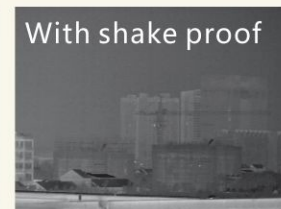
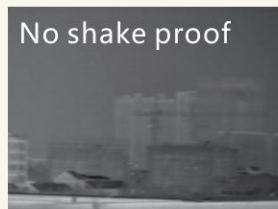


High vision with Thermal system

Vehicle Thermal Imaging system

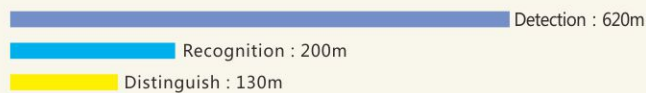


With advanced high resolution 384x288 pixel detector, Vehicle thermal imaging camera can provide excellent night vision image to help driver to identify the objects in front of you when driving in the darkness or dazzle.



Weather condition: 25°C , 1atm , Visibility 10Km , 60%RH

Car (2.3x2.3)



Person (1.7x0.5)



Parameter

Item	Parameter	
Detector characteristics	Detector type	Uncooled FPA microbolometer
	Array size/format	384x288
	Pitch	25μm
Image characteristics	Field of view	28.4°x21.5°
	Thermal sensitivity	≤80mK@30°C
	Frame rate	50Hz
	Focus	Fixed,19mm, 3m to ∞
	Spectral range	8-14μm
	Imaging process	Auto, shake proof process
Power supply	External power	11-30V DC
	Power consumption	≤5W
Environment	Operating temperature	-40°C- +55°C
	Storage temperature	-55°C- +70°C
	Encapsulation	IP66
Physical characteristics	Weight	<700g
	Dimensions	<130mmx65mmx65mm
Interface	External DC input	YES
	Video output	PAL

▲ The information contained in this document is subject to change without notice